

# Expanding Healthy Food Access in Your Community: Data



**FOOD FOR ALL  
BROWARD**

*A Commitment to Increasing Access to Healthy Foods*

**UHP**  
Urban Health Partnerships

**Anthony Olivieri, MURP**  
**January 18<sup>th</sup>, 2018**



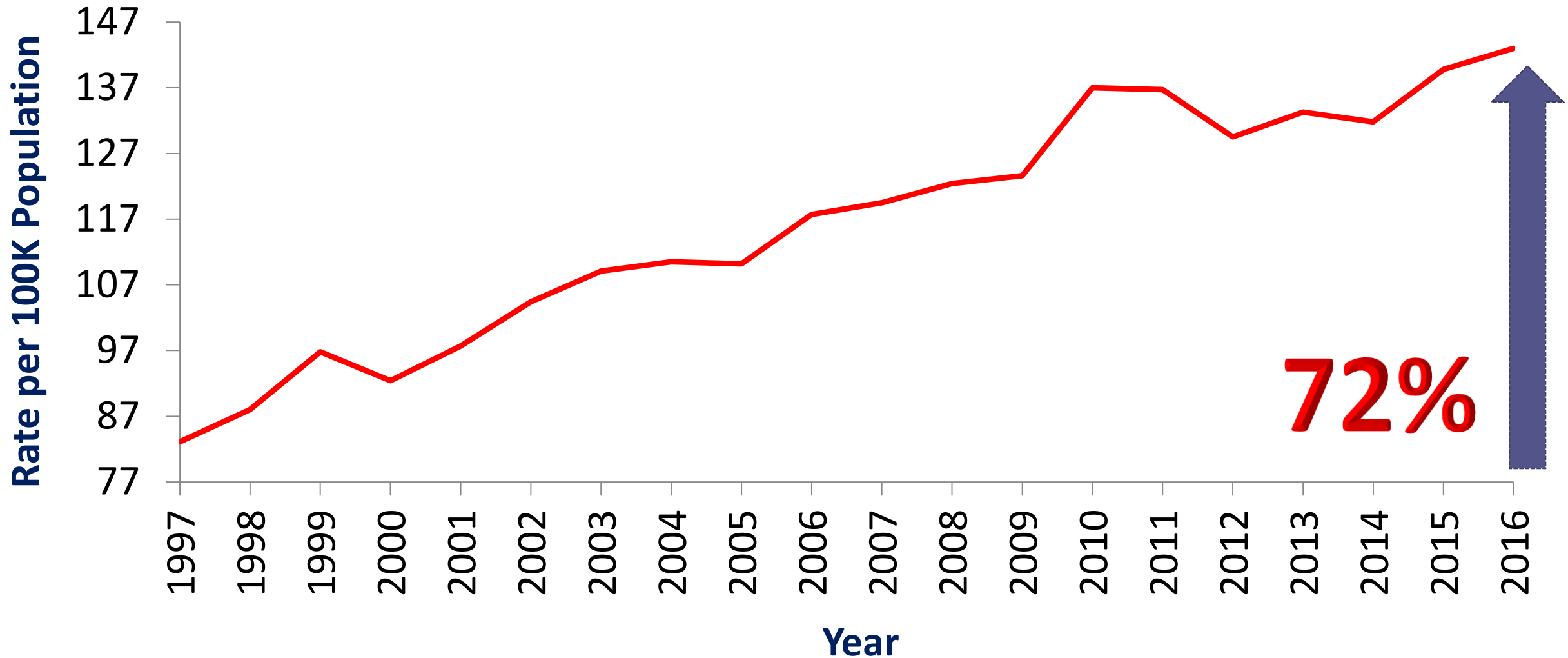
Food for Health, the Environment, Economy & Democracy

**FHEED\*LLC**

Community Food Systems Planning and GIS

# Broward Diabetes Rates are Climbing

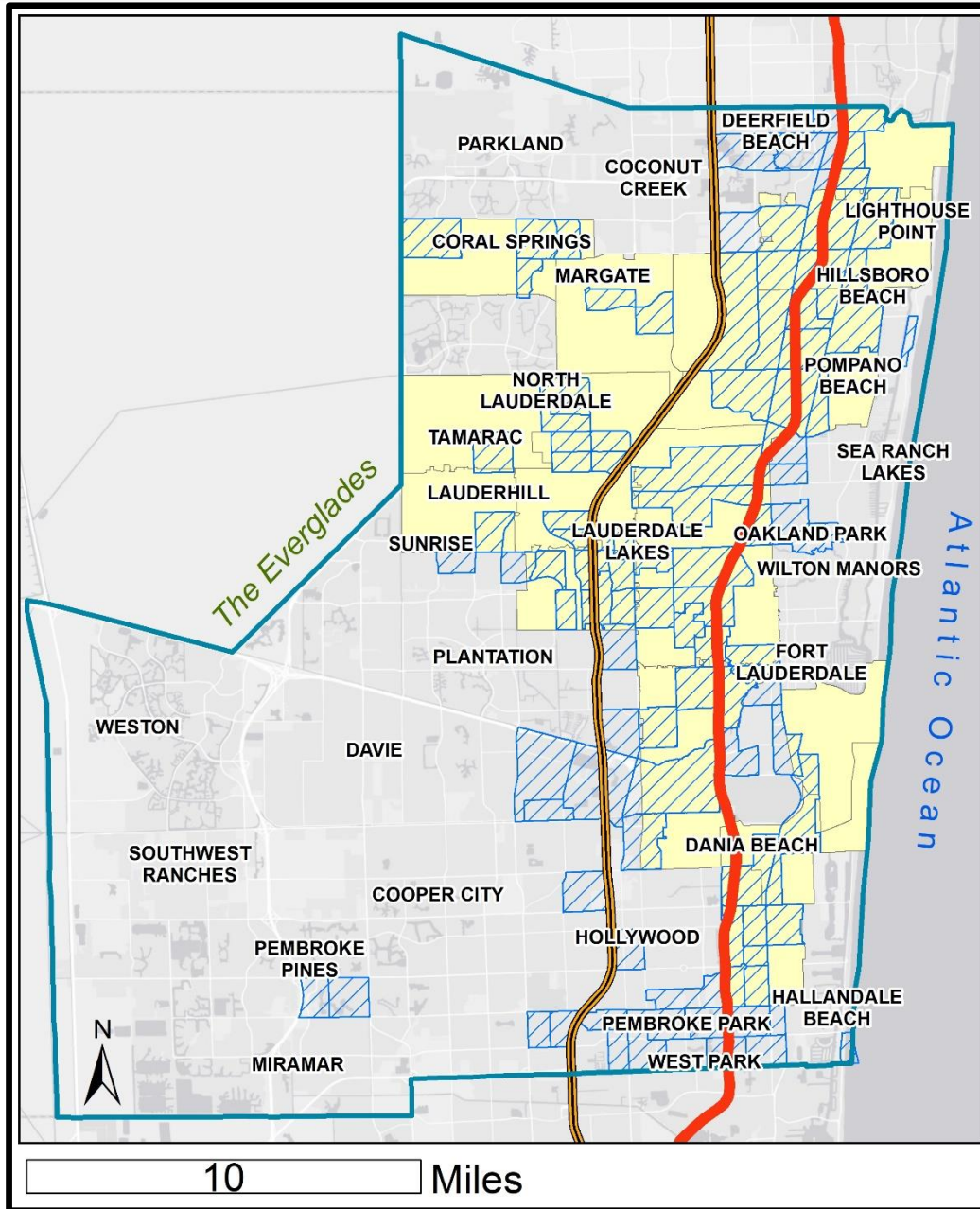
Preventable Hospitalizations Under 65 from Diabetes, Single Year Rate


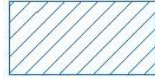


Data: Florida Agency for Health Care Administration (AHCA) via FloridaCharts.com



# Broward Food Deserts & Diabetes

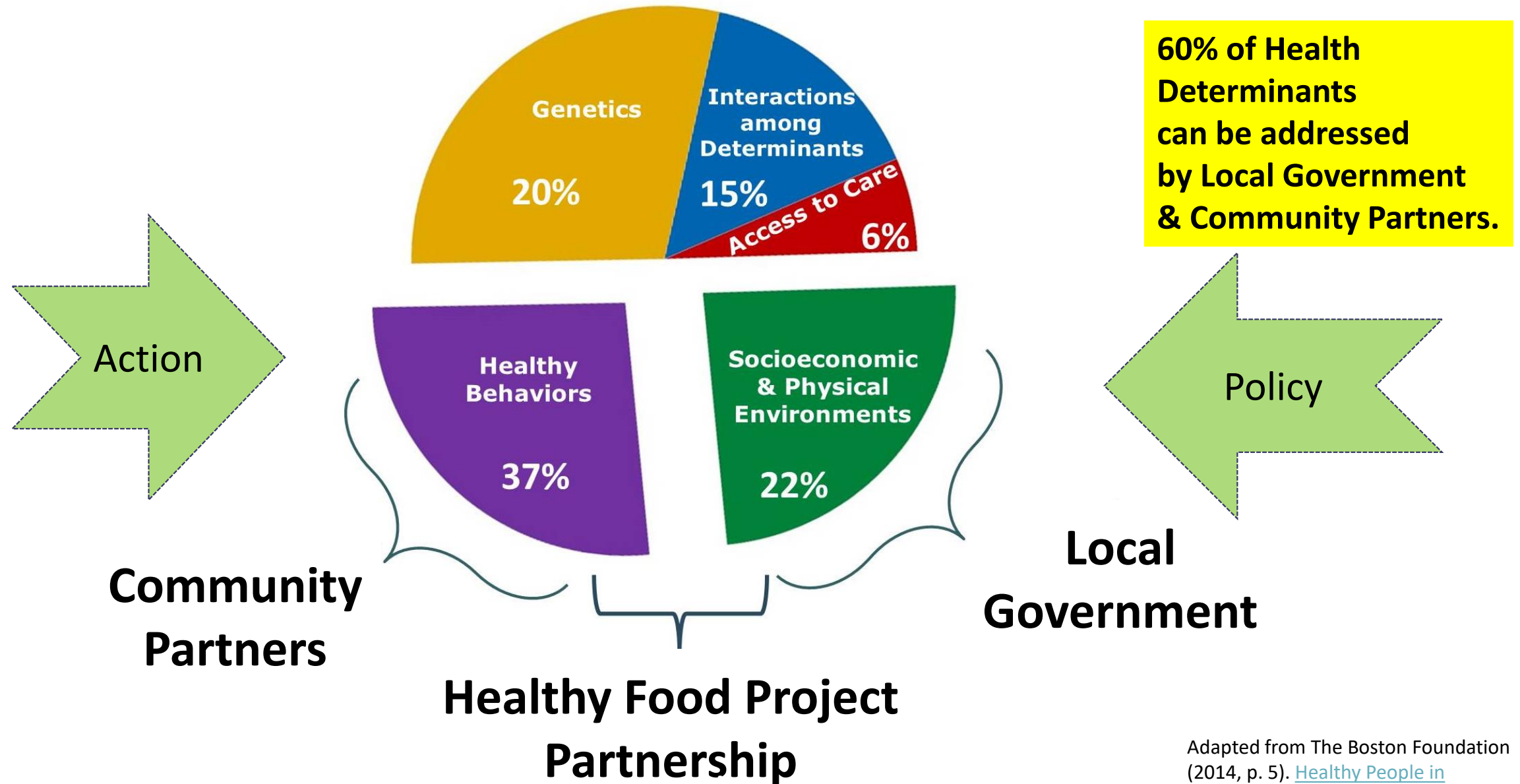


-  Broward County
-  Food Deserts 2015
-  Diabetes Above County Rate 2014

## Major Freeways

-  I-95
-  TURNPIKE

# Local Policy and Determinants of Health



# Policy Efforts Across Broward County

**“In accordance with a comprehensive plan”**

**“The danger is that zoning may be considered a substitute for city planning and that, a zoning plan having been adopted, enthusiasm and interest may die out. Zoning is not a substitute for a city plan.”**

**Nelson P. Lewis (1949) quoted in Charles Harr (1955). *In Accordance with a Comprehensive Plan***

# Diabetes and Food Deserts by Jurisdiction

Jurisdiction	Food Deserts	Diabetes	Diabetes Percent Relative to County 123/100K rate
BMSD	2	277	126
COCONUT CREEK	0	146	19
DANIA BEACH	3	106	-14
FORT LAUDERDALE	9	149	21
HALLANDALE BEACH	3	78	-37
HOLLYWOOD	11	109	-12
LAUDERDALE BY THE SEA	0	72	-42
LAUDERDALE LAKES	4	278	126
LAUDERHILL	8	226	84
MIRAMAR	4	84	-32
PEMBROKE PARK	2	106	-14
PEMBROKE PINES	2	54	-56
POMPANO BEACH	13	140	14